



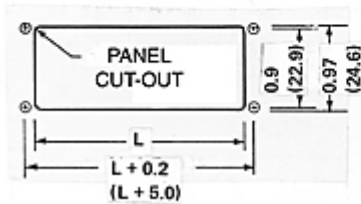
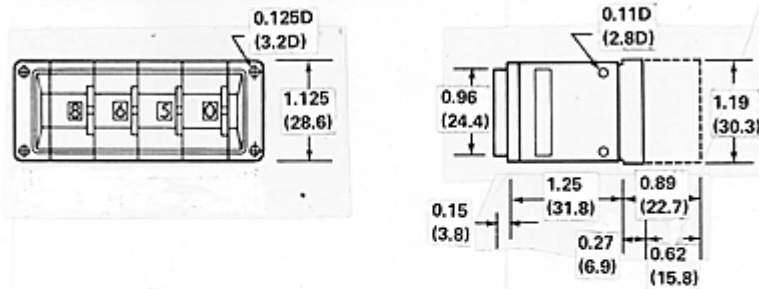
Model MR Rear Mount Switch

Popular rear mount switch, 1/2" wide module but lower profile than IR model. Available in matte black, in most popular 10-position codes including Decimal, BCD, BCD w/complement. Options and accessories include: Extended boards for diode suppression, Termination Pins, Half bodies, Endplates and [Connectors](#). Various color wheels and legends available.



Model MR

DIMENSIONS IN INCHES (IN MILLIMETERS)



PANEL CUT OUT FORMULA

- L = $W \times N + C$ = Width of cut out
- W = Width of module, i.e. switch, blank body or divider plate = 0.5
- N = No. of modules in bank
- C = Width of pair end plates + tolerance = 0.43

